



# PALO VERDE COLLEGE

Education Master Plan / Facilities Master Plan

SWOT Analysis  
March 3, 2016

CW/P + hpi architecture

## GUIDEING PRICIPLES

- ❖ All campus **planning begins with the program of instruction**
- ❖ Planning must be built with & be **supported by the college community**
- ❖ All plans must be **integrated into a unified whole** supporting the college's strategic plan
- ❖ **Hands on approach** & the ability to implement the clients thoughts & ideas into working plans & finished products

## GOALS & OBJECTIVES

- ❖ Supporting student **access, learning & teaching**
- ❖ Balancing & supporting **socialization & formal learning**
- ❖ Creating **unique “places”**
- ❖ Fostering **environmental responsibility**
- ❖ Maintaining student **safety**



## FMP APPROACH

---

Creating a framework of **systems** to support current & future **growth** & campus **improvement** : a roadmap bringing all projects together to serve **one vision**.



## Palo Verde College

- College on the “Hill”
- 6.75 Mile Drive from Center of Blythe
- 10 Minute Drive from Blythe (Average)
- Isolated from town







PVC

BLYTHE



## Facilities

- 7 Buildings
  - 6 Academic Buildings
  - 1 Maintenance & Operations
  - Oldest is 15 years old
- Strong Campus Gateway
- Cohesive Campus Palette
- Sufficient Parking
- Internal Road Bifurcates Vehicular Circulation, Pedestrian Circulation and Parking

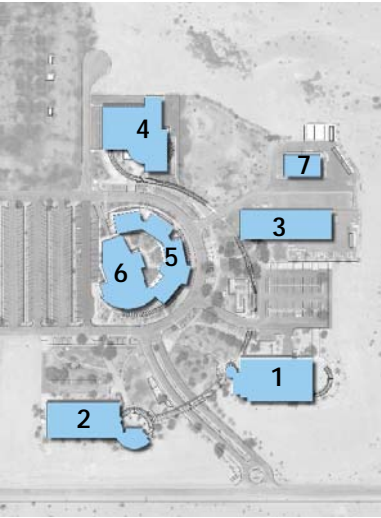
### Other Notes:

- Central Plant is at Capacity
- Bldg. 1: Impacted Space for Student Services
- Theater is costly to run

1. Student Services / Food Service (2000)
2. Classroom / Lab (2000)
3. Technology Building (2006)
4. Physical Education Center (2007)
5. Fine Arts (2011)
6. Theater (2011)
7. M/O (2000)







## PVC Buildings

1. Student Services / Food Service
2. Classroom / Lab
3. Technology Building
4. Physical Education Center
5. Fine Arts
6. Theater
7. M/O

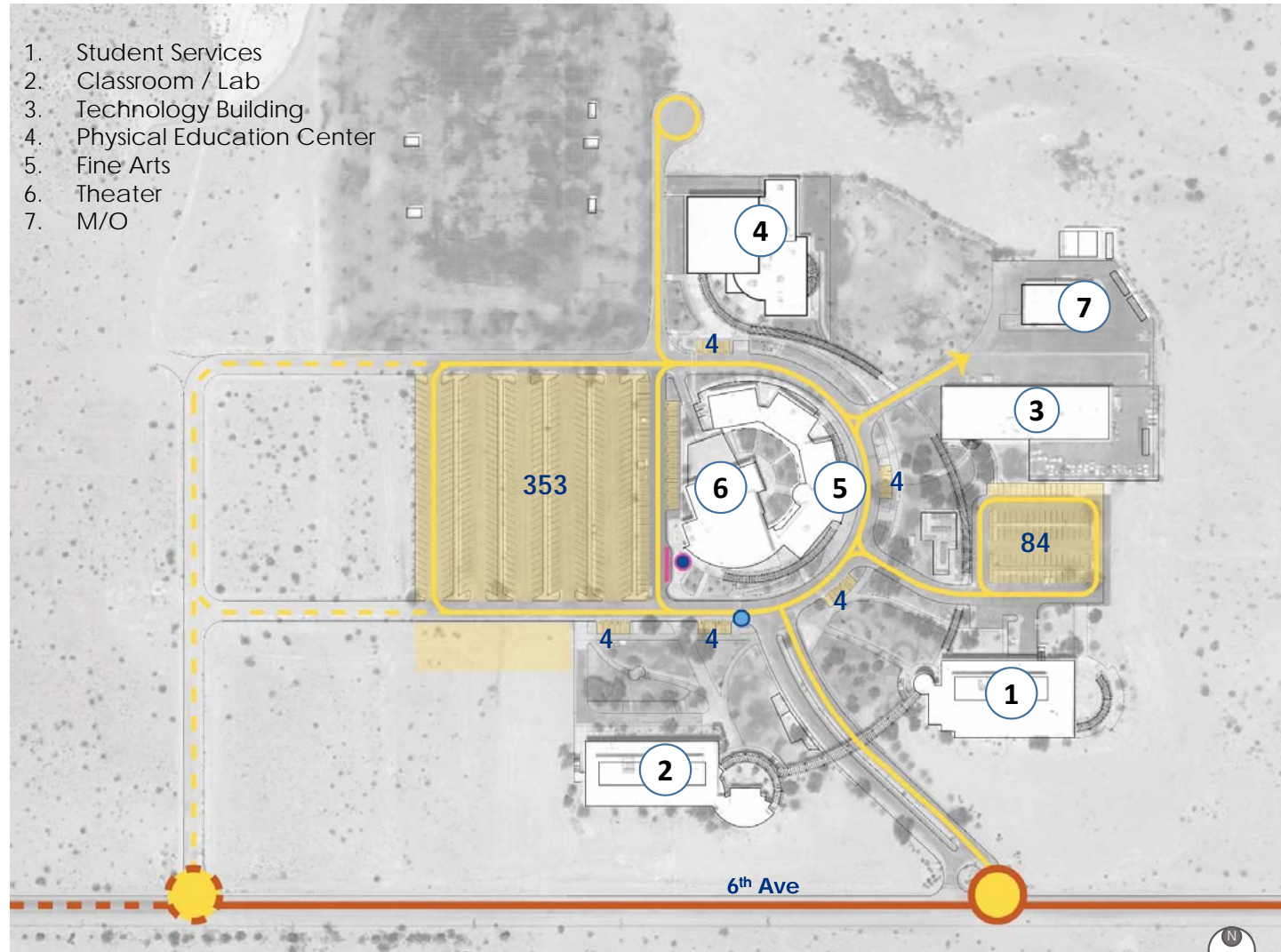




## Vehicular Circulation & Parking

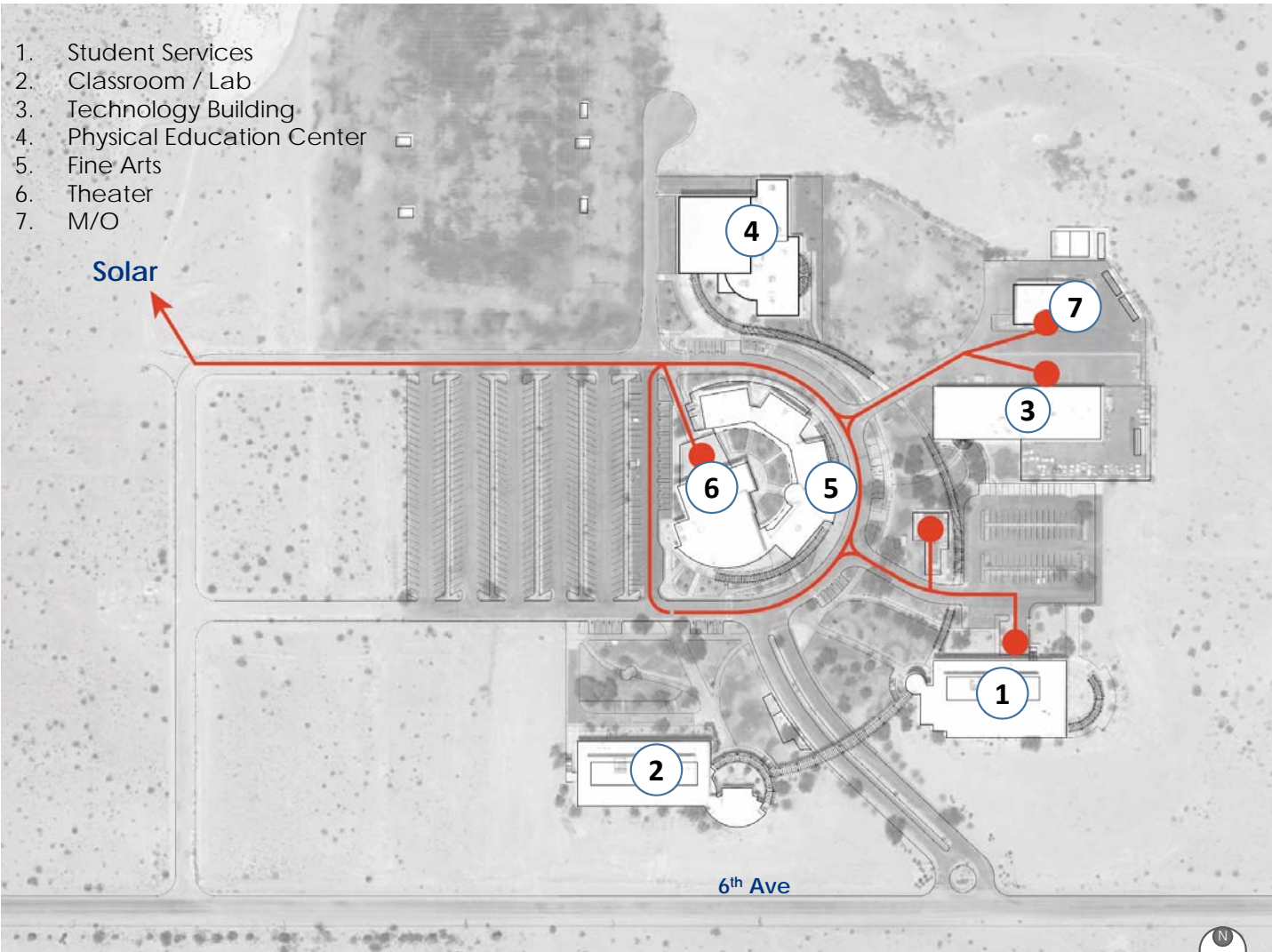
- 1 Primary Entry onto Campus
- 1 Transit Stop (or 3?)
- Loop Circulation
- Vehicular Circulation separates buildings, parking, pedestrians
- Pedestrian bridge between Student Services & Classroom/Lab
  - Addresses Accessibility
  - Separation of vehicular and pedestrian movement
- 457 Parking Stalls (paved)  
1.9:1 Parking Ratio Today  
(using 881: 2014 head count)

- Arterial Road (improved)
- - - Arterial Road (not improved)
- Campus Entry
- Vehicular Circulation
- Parking
- Transit Drop Off
- Student Drop off
- Entry



## Service

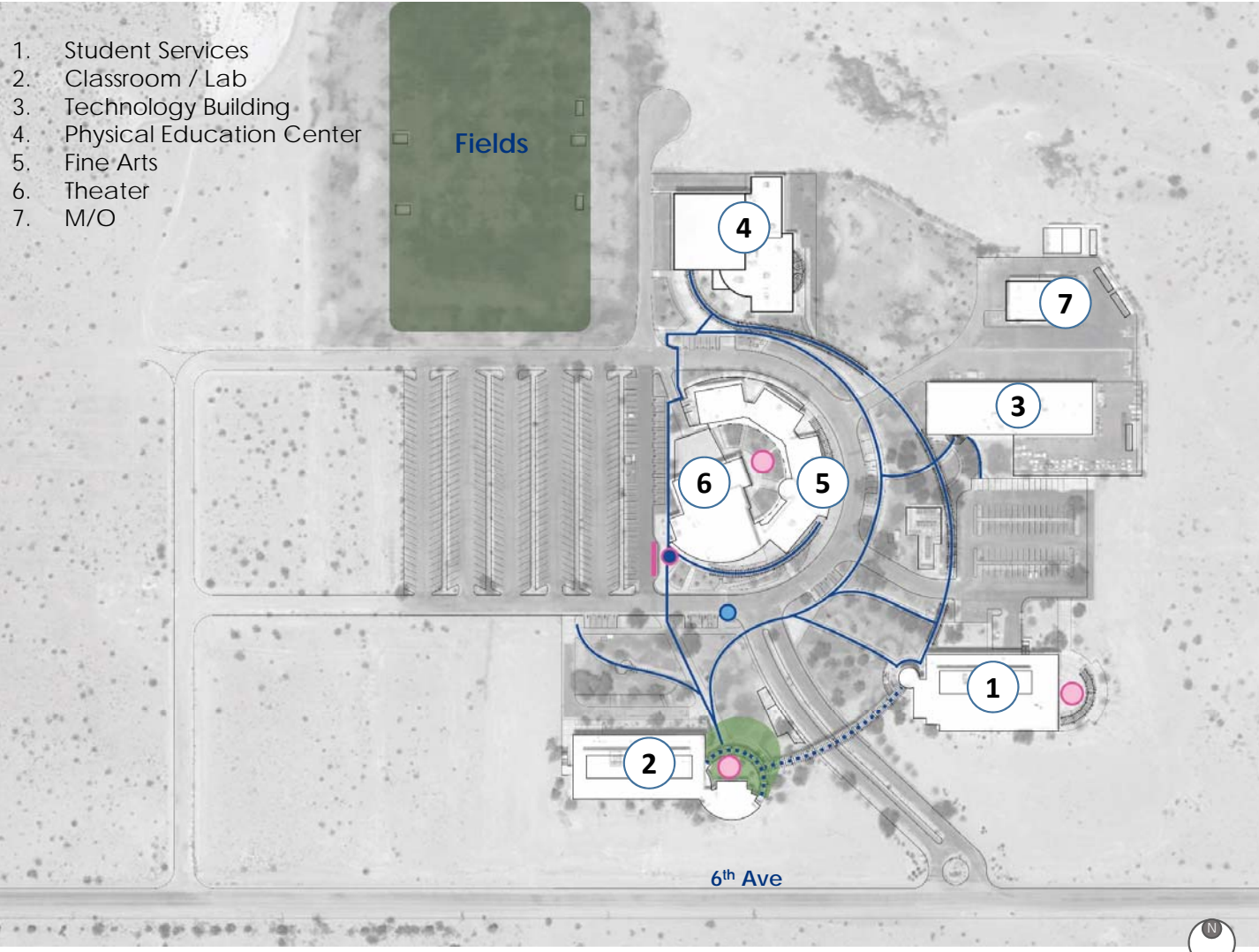
- Shares access with vehicular circulation
- Does not use pedestrian path ways



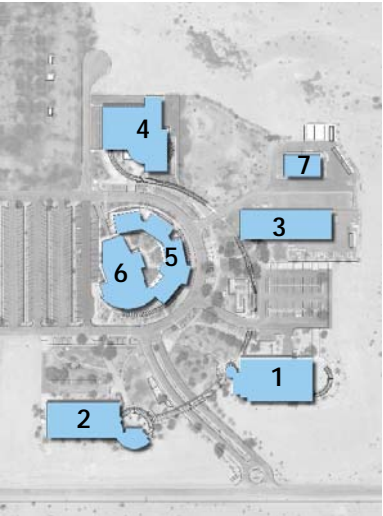


# Pedestrian Circulation & Open Space

- Extreme weather / temperature swings
- Defined arcade along pedestrian walks
- Pedestrian bridge between Student Services & Class / Lab
- Minimal outdoor spaces for gathering / socialization







## PVC Buildings







1. Student Services / Food Service
2. Classroom / Lab
3. Technology Building
4. Physical Education Center
5. Fine Arts
6. Theater
7. M/O

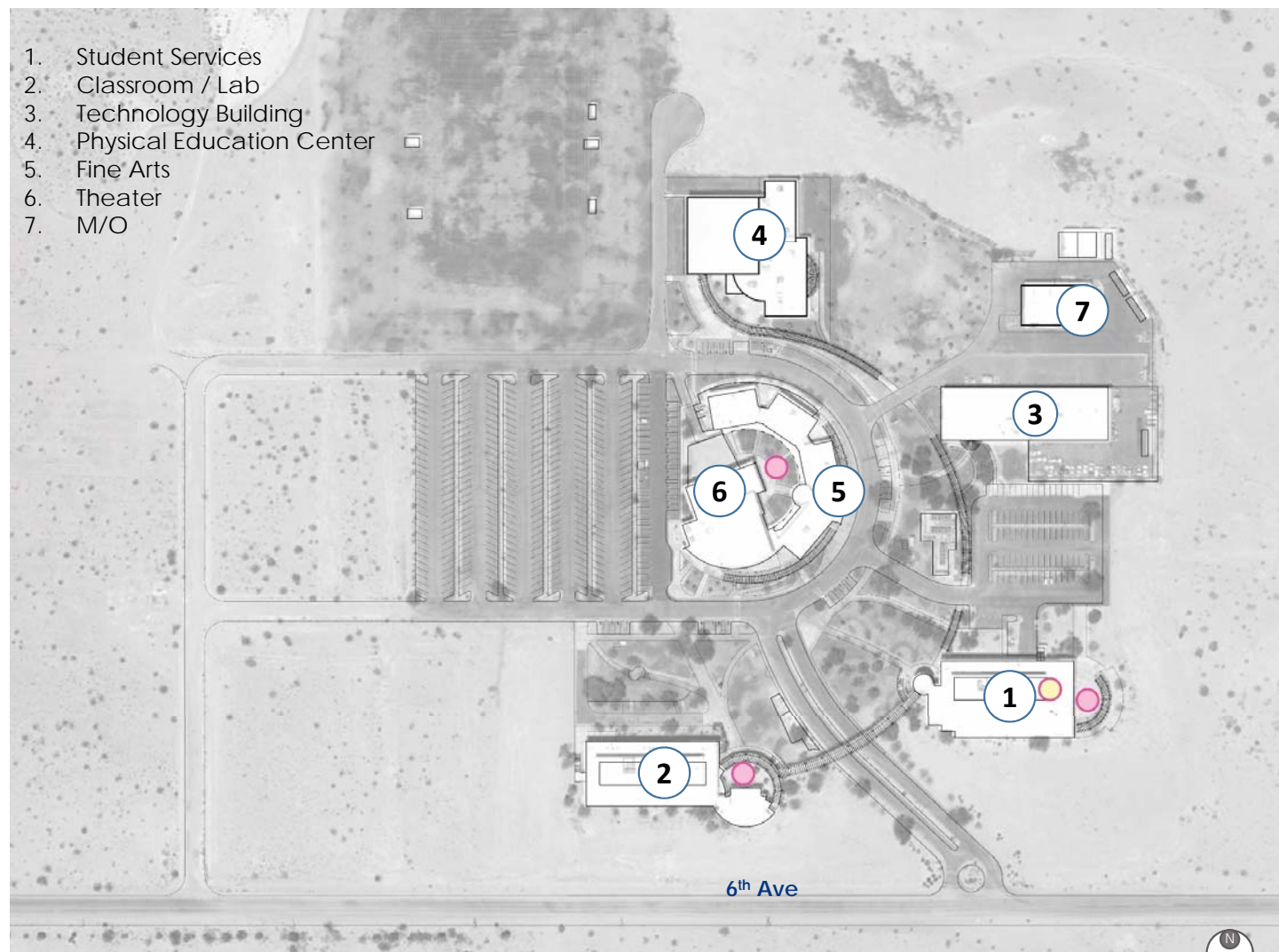


## Interior Space for Students

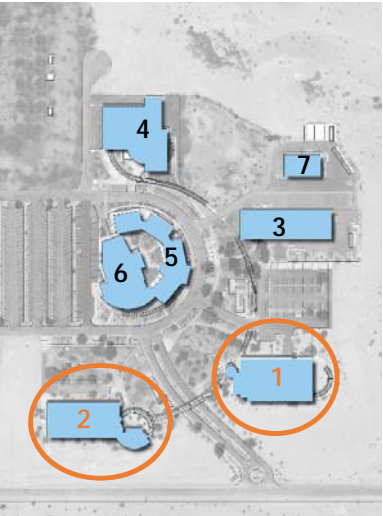
- Building 1
  - Food Service
  - Student Lounge
- Building 2
  - Open Computers
- Opportunity to capitalize on wide interior hallways, provide spaces for students

1. Student Services
2. Classroom / Lab
3. Technology Building
4. Physical Education Center
5. Fine Arts
6. Theater
7. M/O

-  Transit
-  Student Drop off
-  Entry Plaza
-  Pedestrian Circulation
-  Node - Outdoor Gathering
-  Open Space





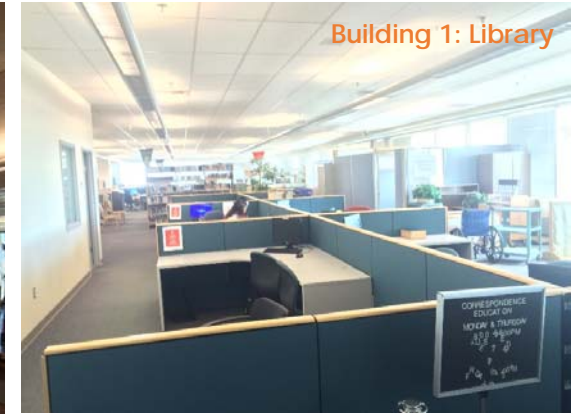


## Existing Student Spaces

1. Student Services / Food Service
2. Classroom / Lab
3. Technology Building
4. Physical Education Center
5. Fine Arts
6. Theater
7. M/O



Building 1: Food Service



Building 1: Library



Building 2



Building 2



Building 1: Library



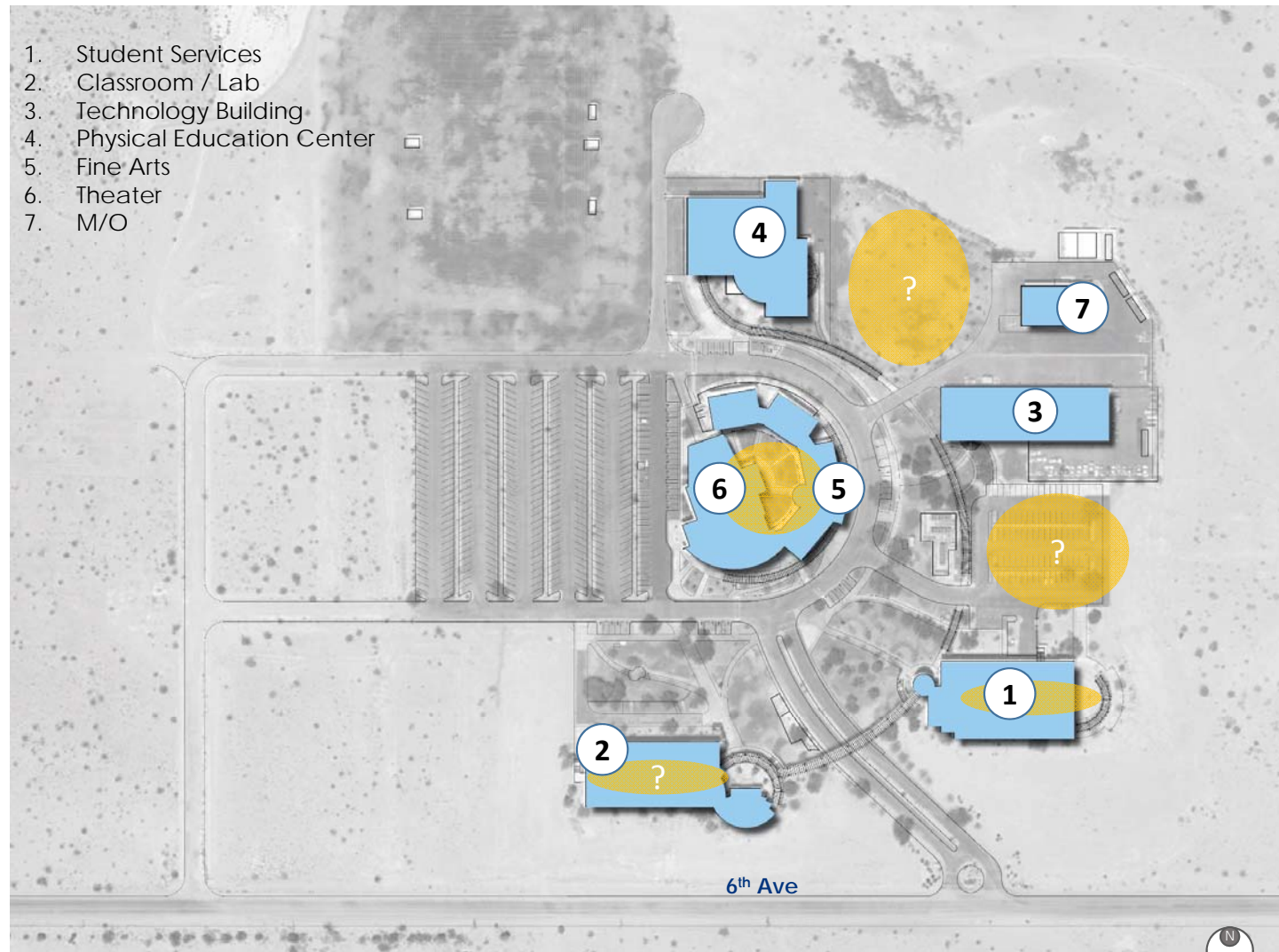
PVC Facilities Master Plan

---

**OPPORTUNITIES FOR DISCUSSION**

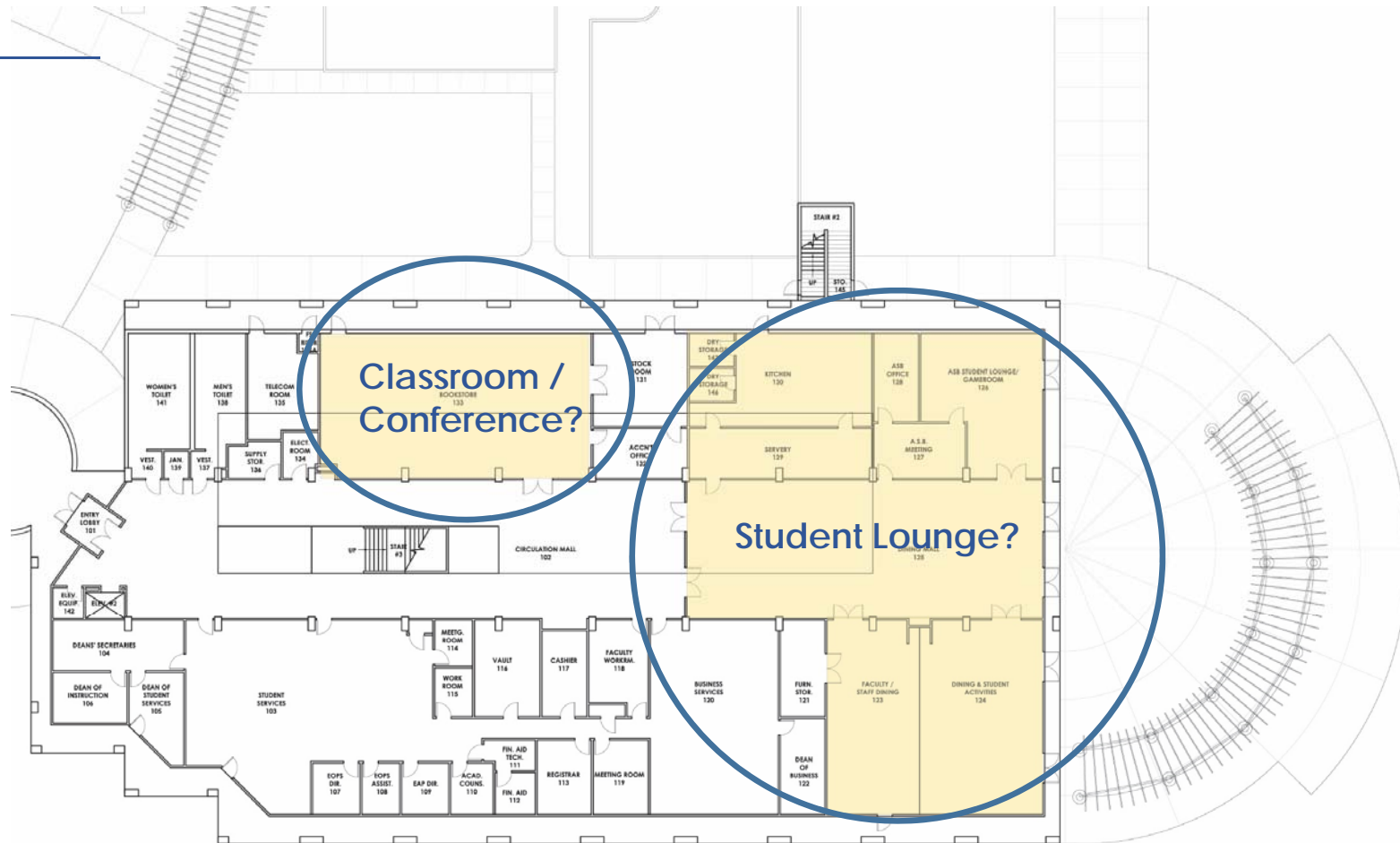
## Future Growth

- Renovate Interior Spaces to support Nursing. Confirm Spaces:
  - CL 202/203
  - CL 223/224
  - CL 114/115
- Expand Student Services / Student Activities
- Maximize space within Theater / Fine Arts Buildings
- Support CTE
- Additional Lecture / Lab / Office facilities to support 2030 Growth



## Future Growth

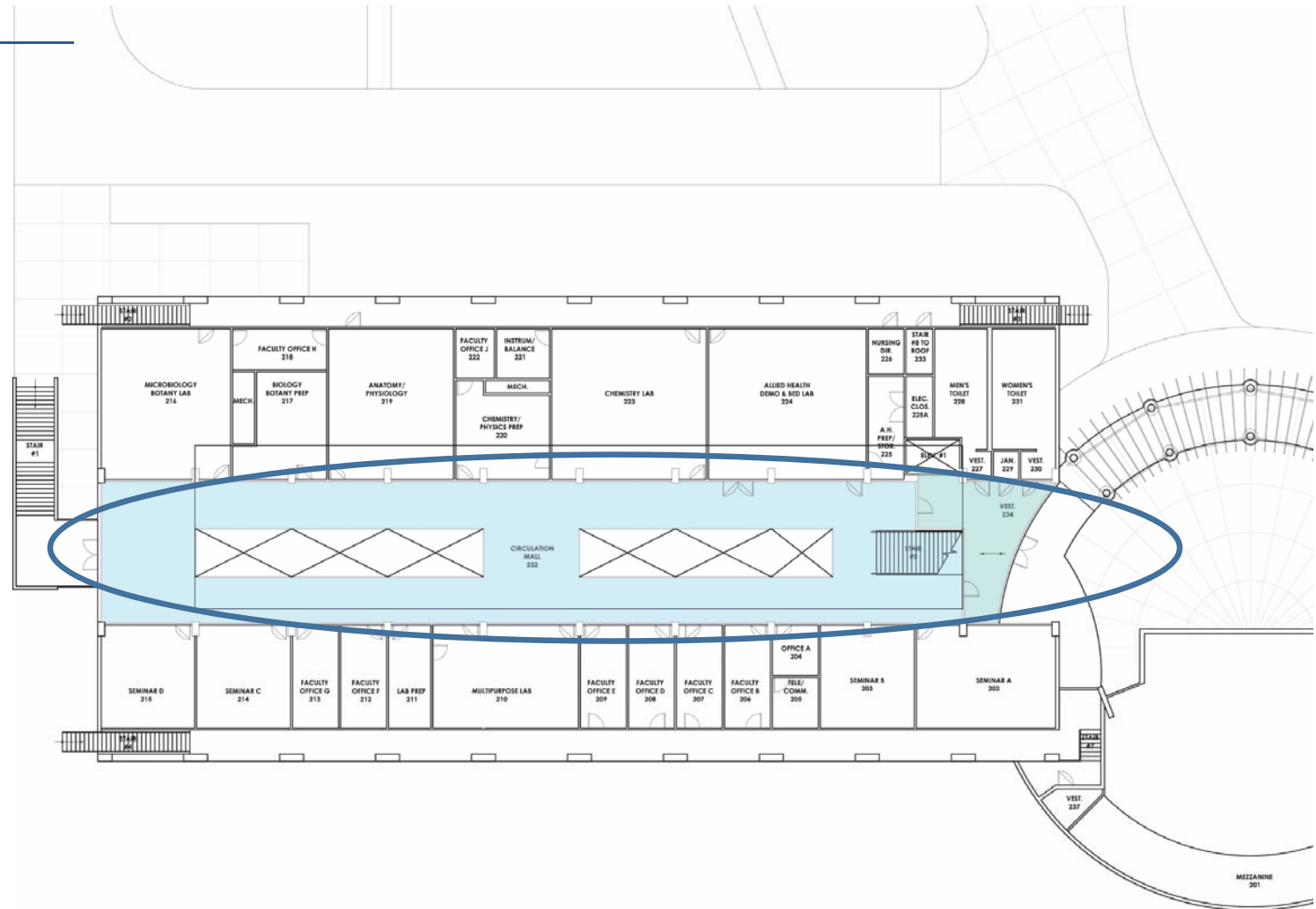
- Expand Student Services / Student Activities
  - Relocate Administration / District Offices to potential new facility?
  - Relocate Bookstore / Student Lounge (133) to 123/124 Classrooms or Conferencing. Engage Student Lounge with Dining Mall
  - Renovate interior hallways as student spaces to encourage group study & socialization





## Future Growth

- Renovate interior hallways as student spaces to encourage study
- What do the students need?





SOCIAL / PLAY



GROUP / INDIVIDUAL STUDY



# PVC Facilities Master Plan

---

## NEXT STEPS

- Marry the EMP & FMP
- Refine Master Plan Recommendations
- Go-To Meeting: March 17, 2016



# PVC Facilities Master Plan

---

## NEXT STEPS

- Marry the EMP & FMP
- Refine Master Plan Recommendations
- Go-To Meeting: March 17, 2016

DISCUSSION:  
QUESTIONS & ANSWERS

